

Secure I/O 2

Secure Door Control Module



Secure I/O 2 is a secure door control module that provides added level of security over edge-based distributed access control systems. The device receives the encrypted signal from Suprema IP access readers to control the lock to provide extra layer of security for the door control. Packed in the ultra-compact form factor, Secure I/O 2 easily fits in limited spaces.

Features



Ultra-compact size
· Easy to install in smaller spaces

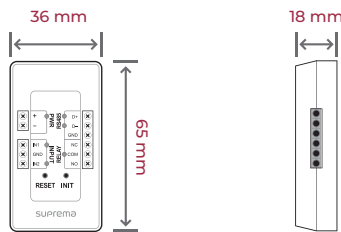


Encrypted communication with connected device
· AES-128 encryption



Industry standard communication via OSDP

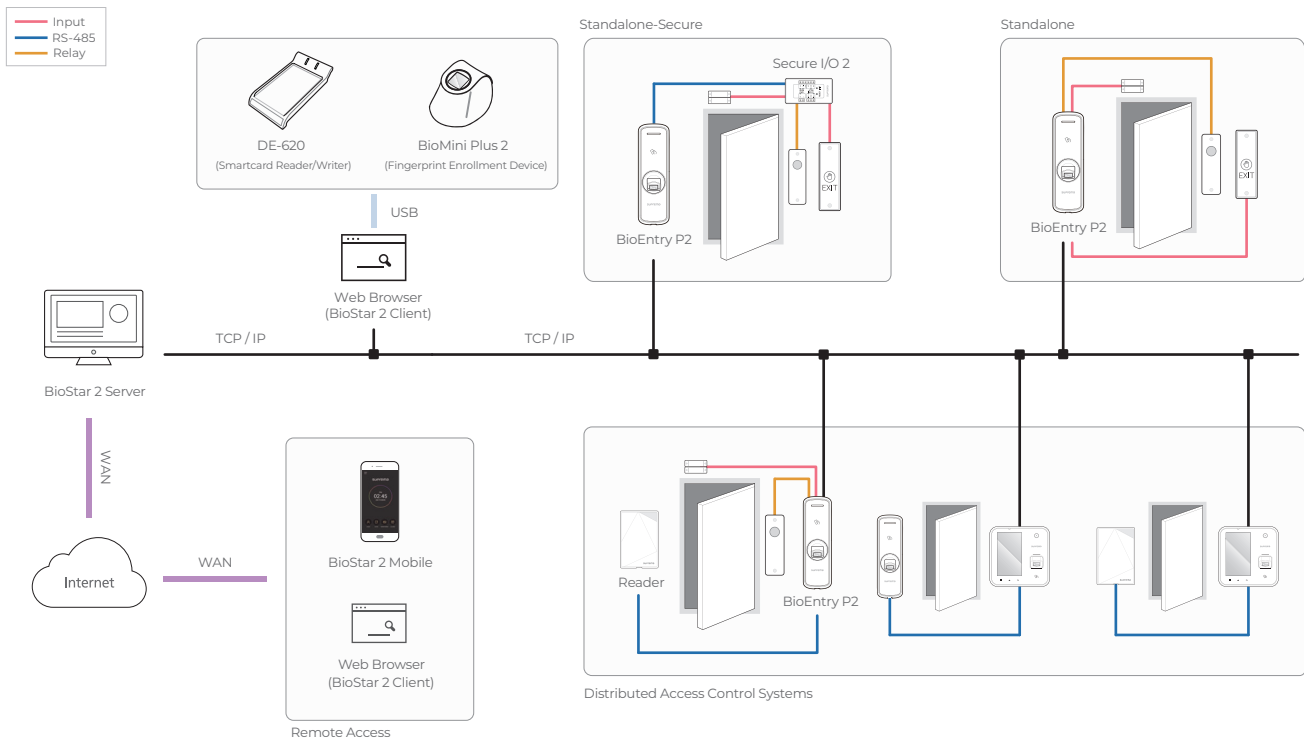
Dimensions



Specifications

| | |
|-------------------------------|--|
| CPU | Cortex M3 72MHz |
| Memory | 128 KB Flash + 20 KB RAM |
| LED | Multi-Color |
| Operating temperature | -20°C ~ 50°C (-4°F ~ 122°F) |
| Storage temperature | -40°C ~ 70°C (-40°F ~ 158°F) |
| Operating humidity | 0% ~ 80%, non-condensing |
| Storage humidity | 0% ~ 90%, non-condensing |
| Dimension (WxH xD, mm) | 36 x 65 x 18 (mm) |
| Weight | 37 g |
| RS-485 | 1ch |
| RS-485 Communication Protocol | OSDP V2 Compliant |
| TTL Input | 2 ch |
| Relay | 1 Relay |
| Power | Voltage: 12 Vdc Current: Max. 0.5 A |
| Certificates | CE, UKCA, FCC, KC, RoHS, REACH, WEEE, ETL Listed to UL 294 |

System Configurations



Suprema Inc.

17F Parkview Tower, 248, Jeongjail-ro, Bundang-gu, Seongnam-si, Gyeonggi-do, 13554, Republic of Korea
T +82 31 783 4502 W www.supremainc.com



For more information visit our website below by scanning the QR code.
<https://www.supremainc.com/en/about/contact-us.asp>